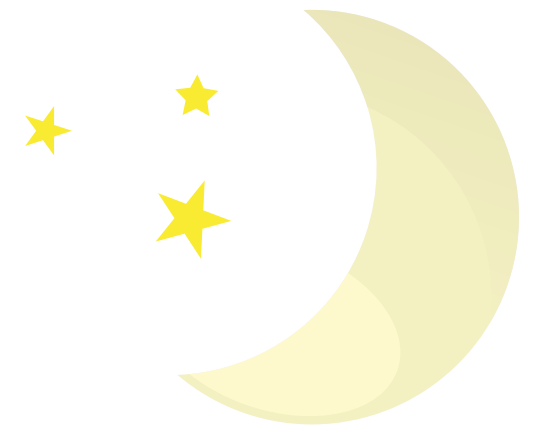


INFANTS

SAFE SLEEP PLAN



Check in!



Caregivers will visually check on infants every 10-15 minutes while the infant is sleeping. If cot is soiled, bedding and child's clothing will be changed immediately.

Positioning



When placed to sleep, infants will be placed on their backs. When infants can easily turn over from the supine (back) to the prone (front), they will be placed on the back, but be allowed to adapt.

ABCs of Safe Sleep



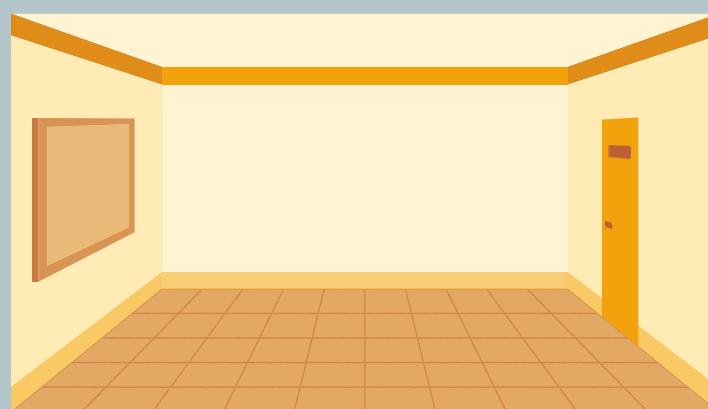
A - alone
B - on their back
C - in a clutter-free crib

Environment



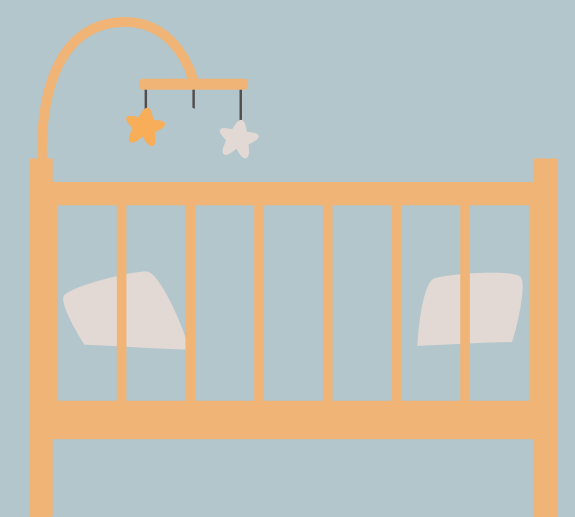
The infant's head shall remain uncovered during sleep. Only one infant in a crib at a time. No additional items (pillows, blankets, or toys) will be allowed in the infant's crib. Infant will not be swaddled, but sleep sacks without arm restrictions are okay. Children will not share bedding.

Room/Caregiver

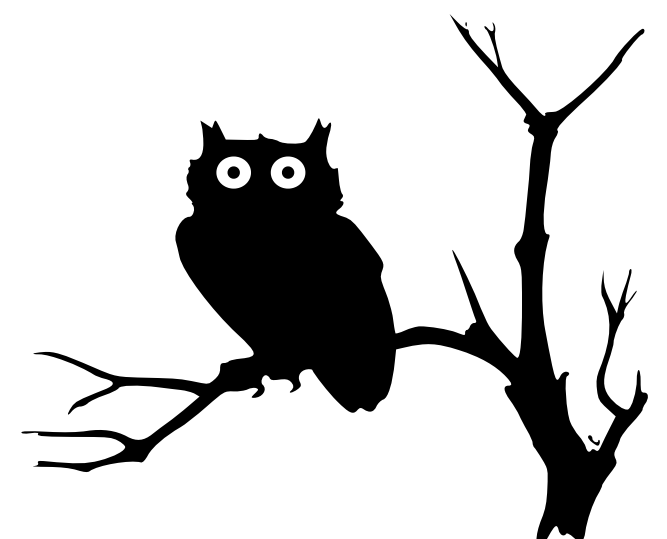


The room temperature will not exceed 75°F. Cribs will be placed 2 feet apart. Room must be light enough to allow staff to visually check child's breathing without using a flashlight.

Other Notes



When children are awake, they shall not be left unattended in cribs or other confinement for more than 30 minutes. If children fall asleep anywhere other than a crib, they will be immediately moved to their crib to sleep.



TODDLER

SAFE SLEEP PLAN

Check in!



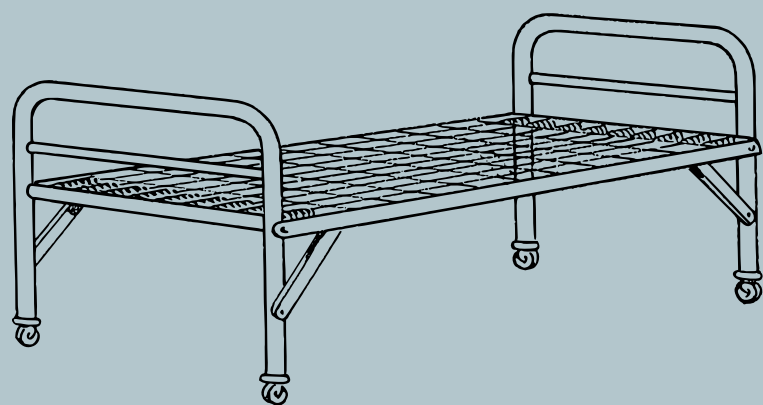
Caregivers will visually check on toddler every 10-15 minutes while the toddler is sleeping. If cot is soiled, bedding and child's clothing will be changed immediately.

Positioning



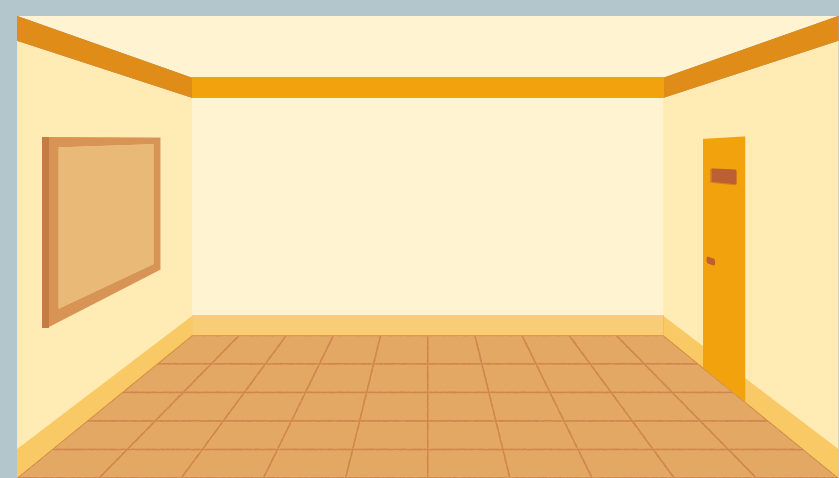
When placed to sleep, toddler will be placed on their backs. Toddler is allowed to adapt their sleep position as needed.

Environment



The toddlers' head shall remain uncovered during sleep. Only one toddler per cot at a time. Each cot will have a top and bottom sheet. No pillow will be allowed on the toddler's cot. Toddler may sleep with one small, soft, non-musical item. Toddler will not be swaddled, but sleep sacks without arm restrictions are okay. Children will not share bedding.

Room/Caregiver



The room temperature will not exceed 75°F. Cots will be placed 2 feet apart. Room must be light enough that you can check on breathing without using a flashlight.



LITTLE LEARNERS

SAFE SLEEP PLAN

Check in!



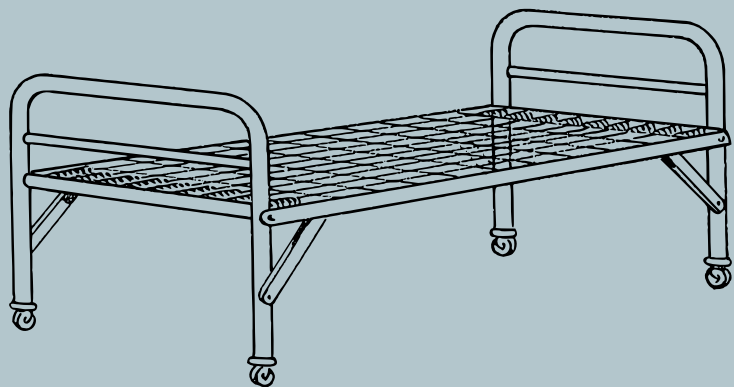
Caregivers will visually check on little learner every 10-15 minutes while the child is sleeping. If cot is soiled, bedding and child's clothing will be changed immediately.

Positioning



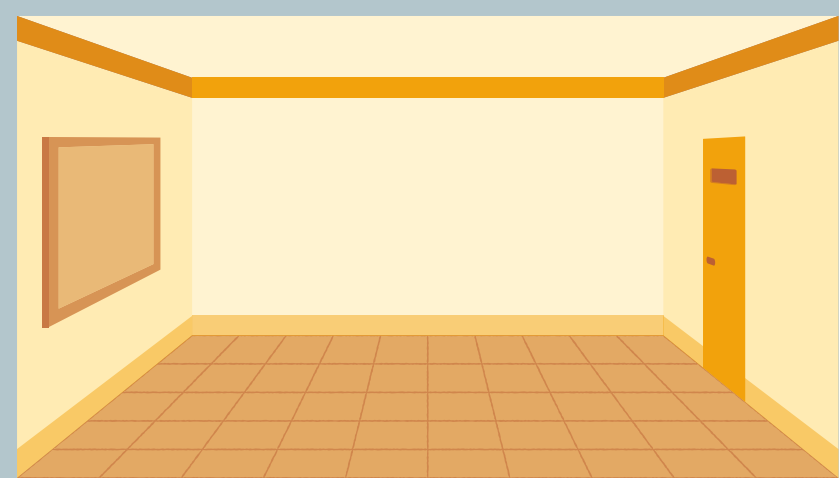
When placed to sleep, little learners will be placed on their backs. Little learner is allowed to adapt their sleep position as needed.

Environment



The Childs' head shall remain uncovered during sleep. Only one child per cot at a time. Each cot will have a top and bottom sheet. Additional items will be allowed on the childs' cot. Little learner will not be swaddled, but sleep sacks without arm restrictions are okay. Children will not share bedding

Room/Caregiver



The room temperature will not exceed 75°F. Cots will be placed 2 feet apart. Room must be light enough that you can check on breathing without using a flashlight.

